

WOODSTOCK WALLS

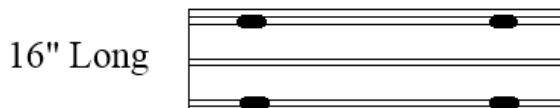
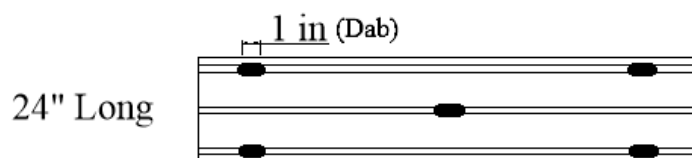
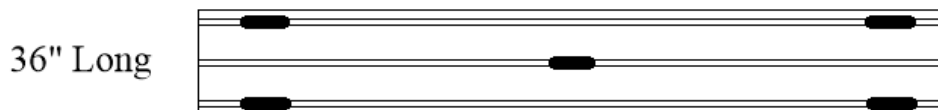
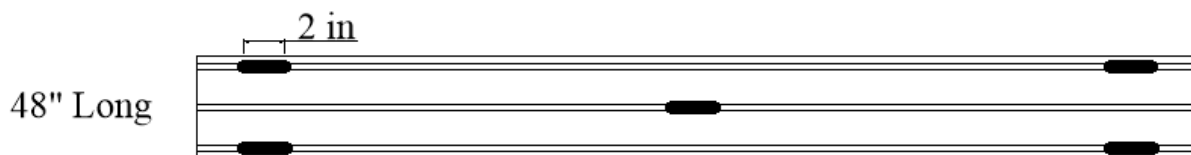
WOOD WALL DESIGNS

AMERICANA COLLECTION Click&Stick INSTRUCTIONS

1. Open box and lay out panels to acclimate in the room for 1-5 days.
2. Lay out the panels in the shape of the wall (if applicable, make any cuts necessary before starting the wall)
3. Put a ¼" wide bead of Click&Stick adhesive in the grooves per bold black lines in the diagram, below.
4. Apply wood panel to the wall, level. Add pressure with your hands to make sure adhesive spreads evenly. (if starting at center of the wall, use a level to make a reference line).
 - a. If starting in the middle of the wall, wait 20 minutes to make sure your first plank is secure before stacking others.
5. Repeat steps 2 & 3 until your wall is complete.

(BLACK LINES ARE REFERENCE FOR ADHESIVE / VIEW FROM BACKSIDE OF PANEL)

-EACH TUBE COVERS APPROX 20SF OF AMERICANA COLLECTION-



Products – 1 Tube / Box

Sequoia, Board Wash, Misty Breeze, Passive Grey, Mystic Walnut, Mixed Onyx, White Onyx, Rough Ruby, Black Onyx, Crystal Barite, Pale Turquoise, Antique Turquoise, Desert Turquoise, Burnt Onyx, Grey Jasper

Products – 2 Tubes / Box

Rustic Mill, Sterling